

The Village of Bradley, Illinois, in Kankakee County, is seeking proposals/bids from qualified contractors to complete the repairs of a steel fire escape, located at the Bradley FD, 147 S Michigan Ave, Bradley, IL.

Repairs shall be made in accordance with the specifications provided by Bright Architecture. An electronic copy of these specifications is available upon request. Make request via email to [TJMemenga@BradleyIL.org](mailto:TJMemenga@BradleyIL.org). Physical inspections are available upon request made to the same email address.

Proposals must be received no later than 10:00am on October 25<sup>th</sup>, 2019.

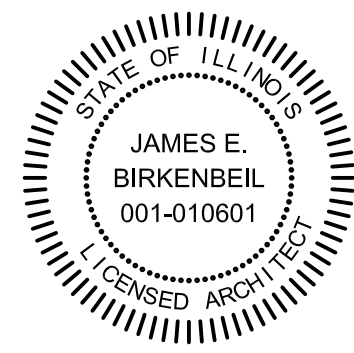
Proposals shall be delivered to Village Hall, Village of Bradley, 147 S Michigan Ave, Bradley, IL 60915

# EXTERIOR STAIR TREAD REPLACEMENT

## VILLAGE OF BRADLEY

**BRADLEY FIRE DEPARTMENT  
147 SOUTH MICHIGAN AVENUE  
BRADLEY, ILLINOIS**

"I HAVE PREPARED, OR CAUSED TO BE PREPARED UNDER MY DIRECT SUPERVISION, THE ATTACHED PLANS AND SPECIFICATIONS AND STATE THAT, TO THE BEST OF MY KNOWLEDGE AND BELIEF AND TO THE EXTENT OF MY CONTRACTUAL OBLIGATION, THEY ARE IN COMPLIANCE WITH ALL APPLICABLE CODES INCLUDING THE ENVIRONMENTAL BARRIERS ACT (410 ILCS 25) AND THE ILLINOIS ACCESSIBILITY CODE (71 IL ADMIN CODE 400)."



*James E. Birkenbeil*  
SIGNATURE

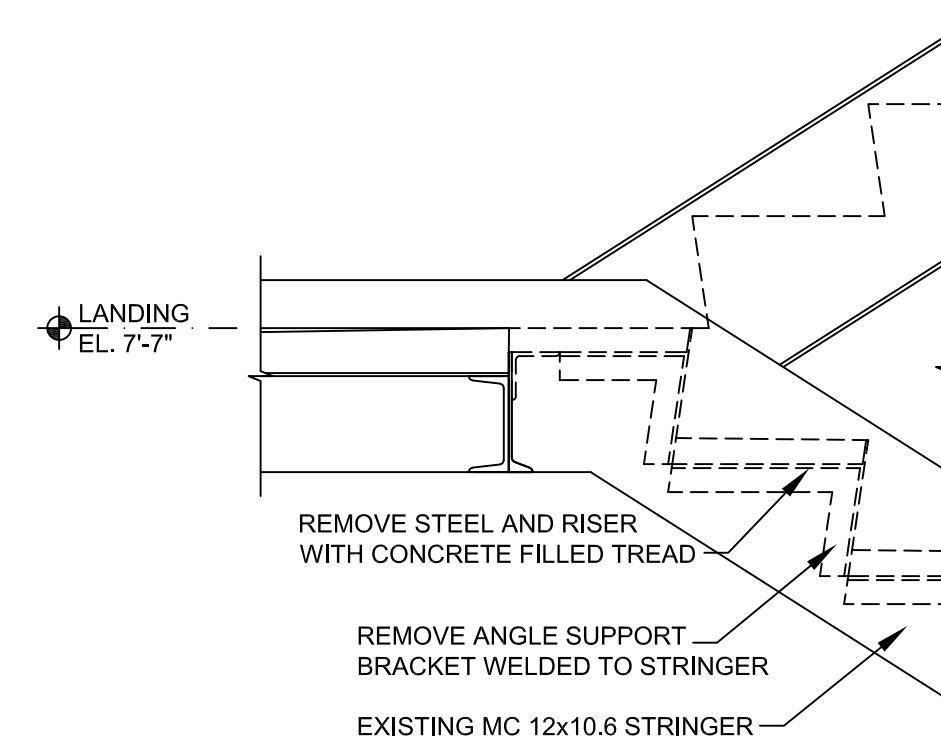
07/11/19  
DATE

11/30/20  
LICENSE EXPIRES

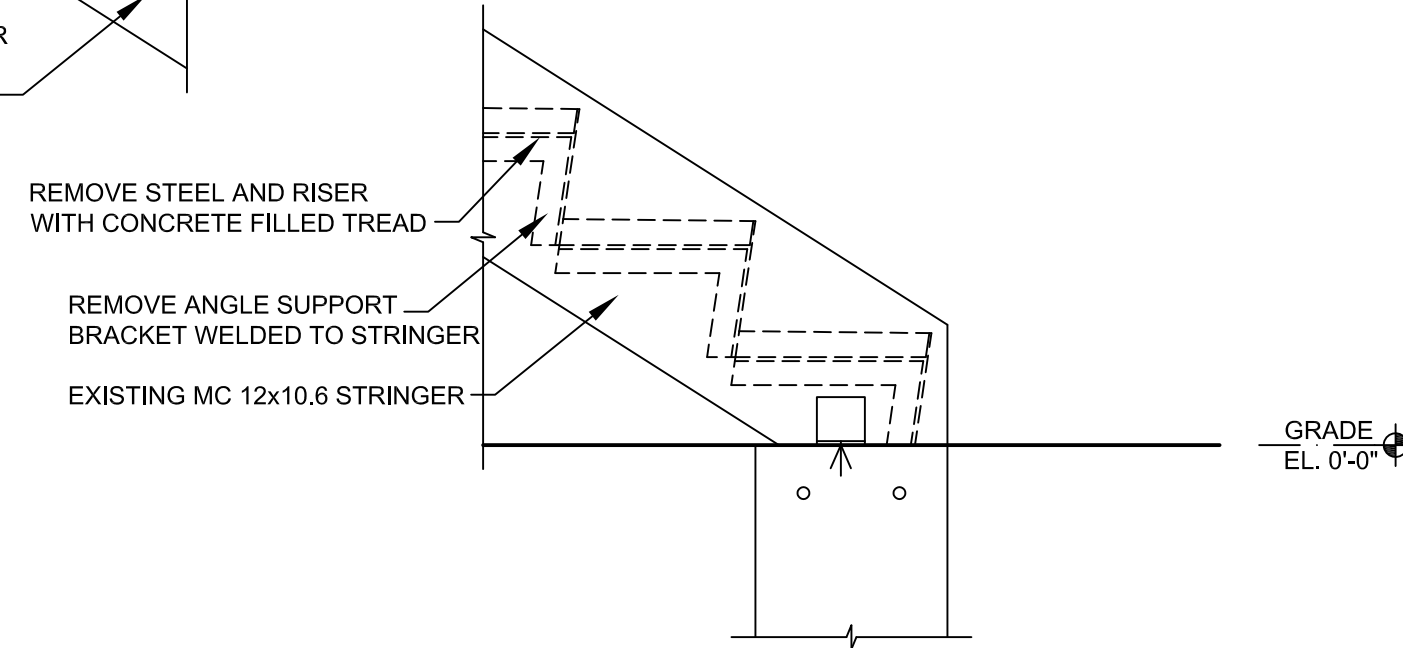
STATE OF ILLINOIS DESIGN FIRM REGISTRATION #184-000164

### ARCHITECT

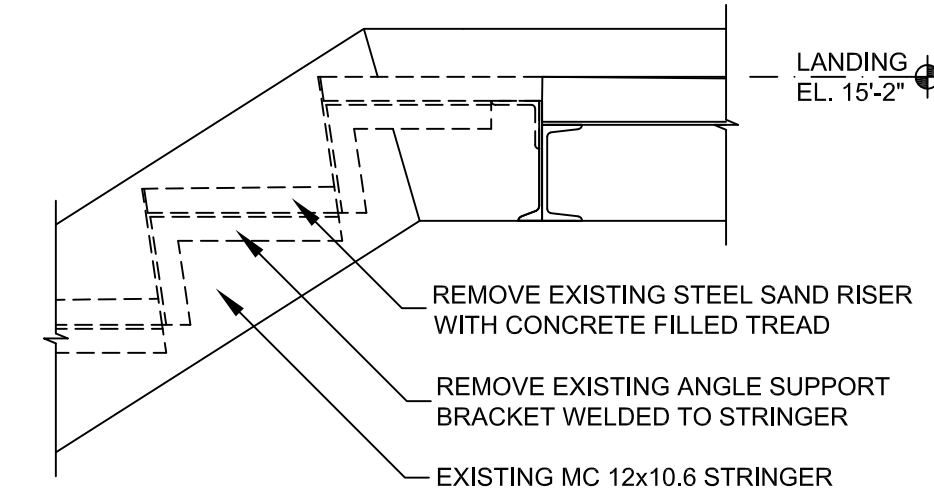
**BRIGHT ARCHITECTURE, INC.**  
200 EAST COURT STREET, SUITE 700  
KANKAKEE, ILLINOIS 60901  
OFFICE (815) 933-8073



**2** DETAIL  
A1.1 SCALE: 1" = 1'-0"

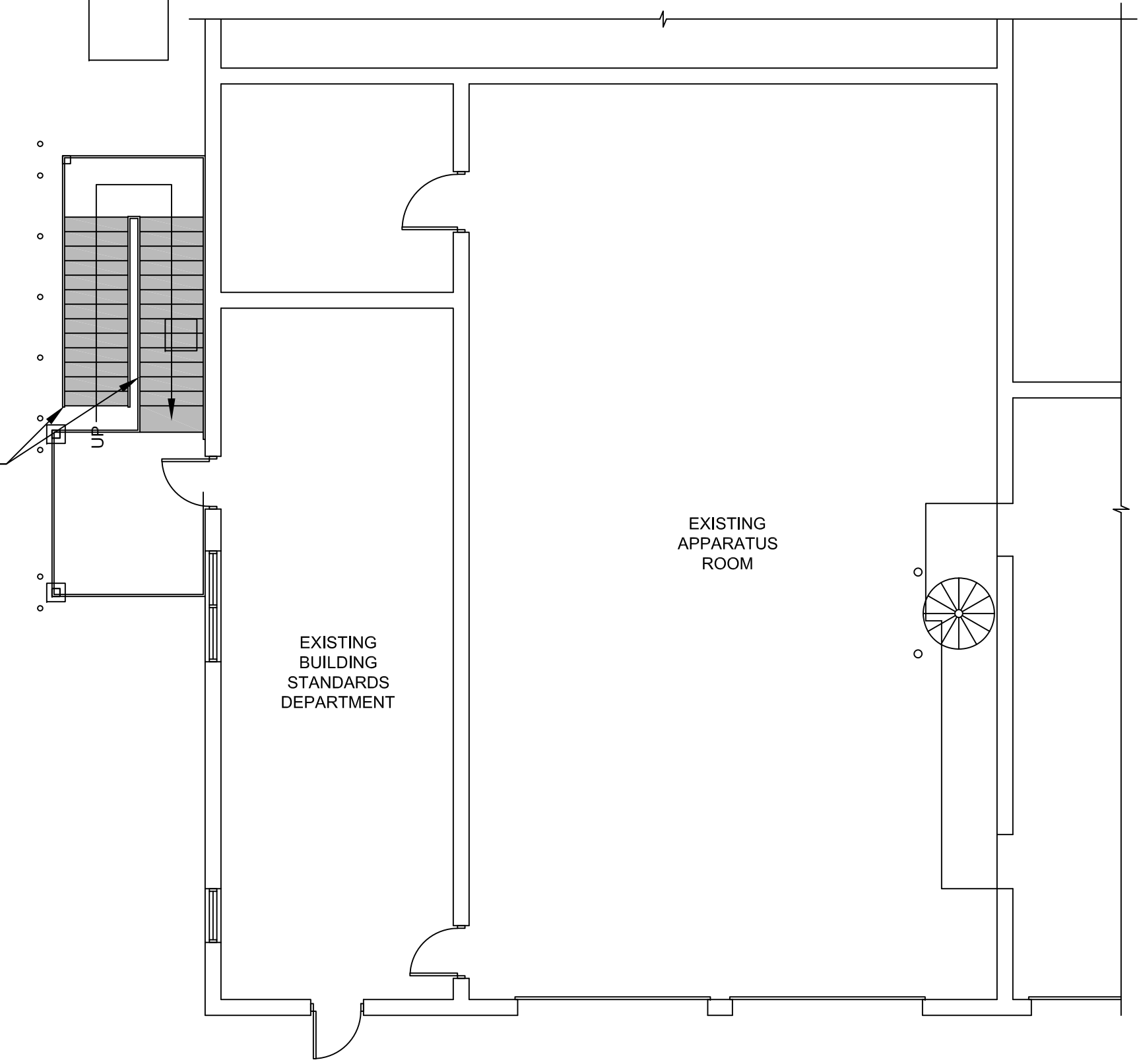


**3** DETAIL  
A1.1 SCALE: 1" = 1'-0"



**1** DETAIL  
A1.1 SCALE: 1" = 1'-0"

REMOVE STEEL, CONCRETE RISERS AND ANGLE SUPPORTS. FURNISH/INSTALL NEW GALVANIZED STEEL SAFETY TREAD WITH ANGLE SUPPORTS WELDED TO CHANNEL STRINGERS



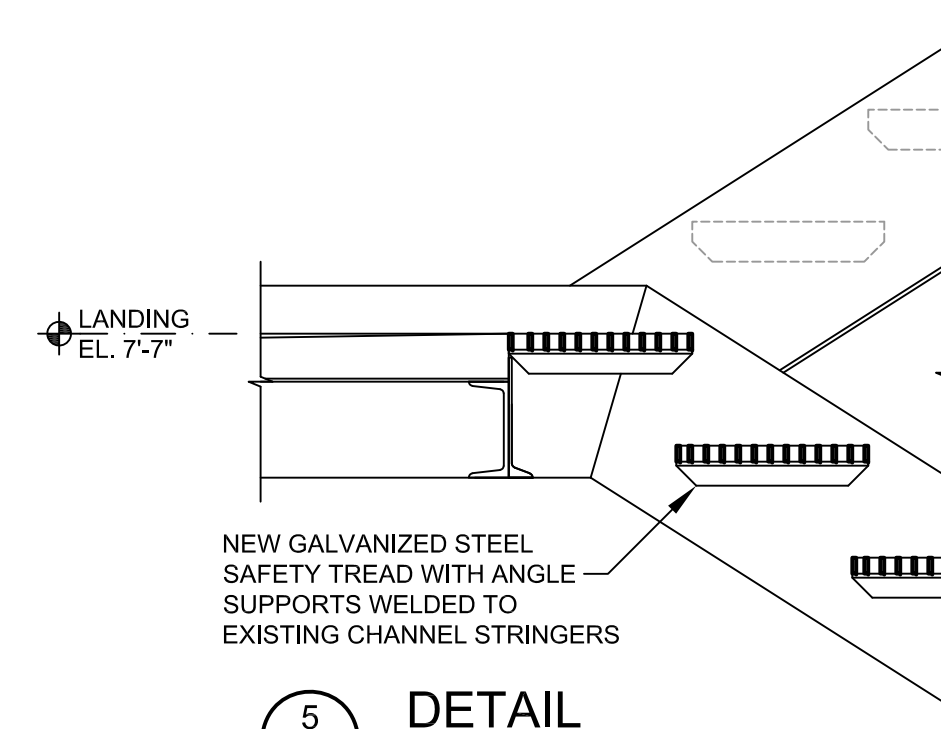
**PARTIAL FIRST FLOOR PLAN**  
SCALE: 1/8" = 1'-0"

#### GENERAL NOTES

- DEMOLISHED MATERIALS SHALL BECOME THE CONTRACTOR'S PROPERTY FOR REMOVAL AND DISPOSAL IN AN APPROPRIATE MANNER.
- PROTECT EXISTING WINDOWS DURING DEMOLITION AND CONSTRUCTION.
- ANY INTERIOR OR EXTERIOR MATERIALS TO REMAIN THAT ARE DAMAGED DURING CONSTRUCTION WORK ARE TO BE REPAIRED TO ORIGINAL CONDITION AT NO ADDITIONAL COST TO THE OWNER.
- STAIR TREAD, TYPE B - STANDARD CHECKERED PLATE NOSING, WELDED PRESS - LOCKED GALVANIZED STEEL TREAD WITH 1 1/4"x3/16" BEARING BARS.
- CLEAN ALL RUST FROM REMAINING STEEL AND REPAINT WITH 2 COATS OF RUST INHIBITOR ENAMEL PAINT.

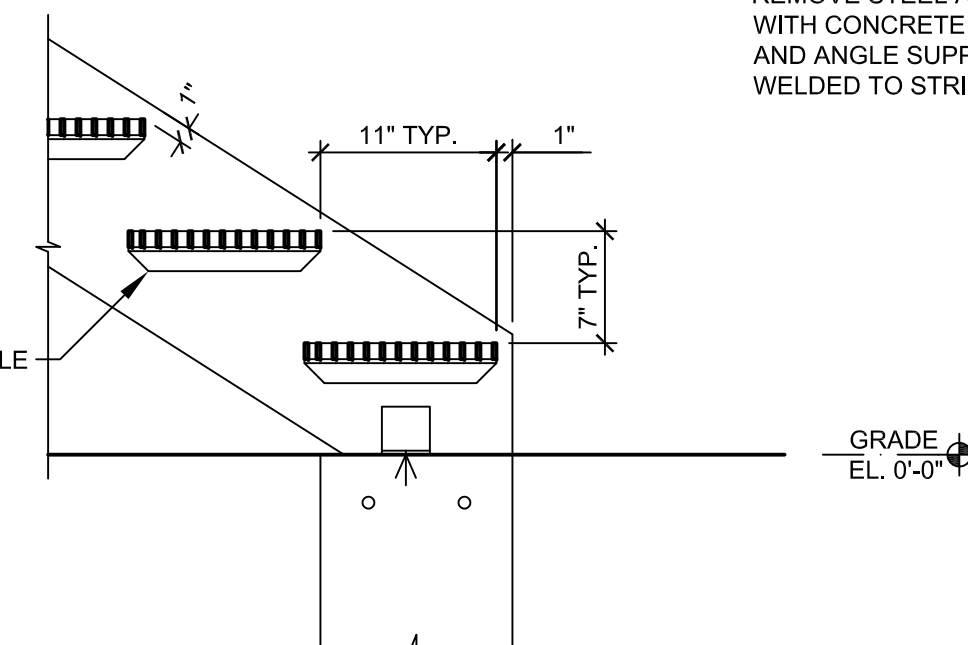
#### DEMOLITION NOTES

- (A) EXISTING METAL AND CONCRETE STEPS TO BE REMOVED AND DISPOSED OF OFF SITE.

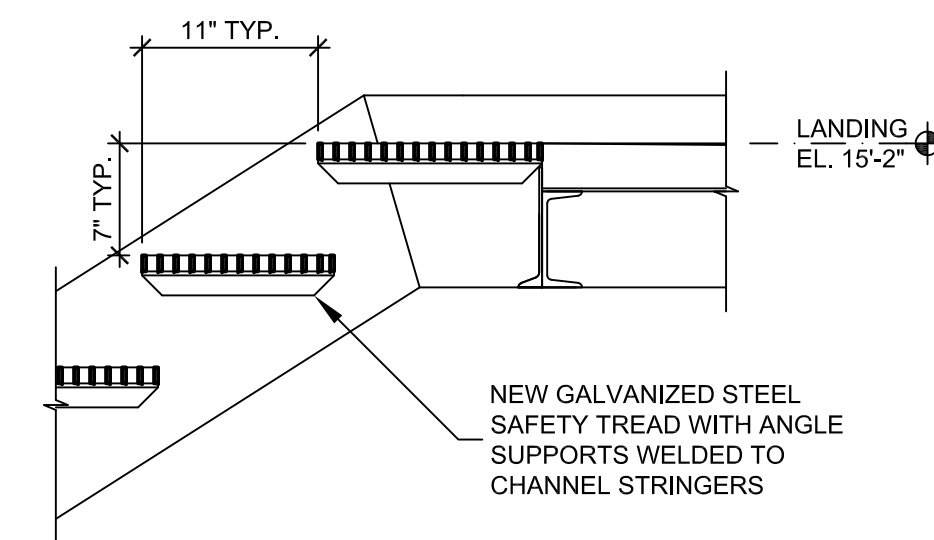


**5** DETAIL  
A1.1 SCALE: 1" = 1'-0"

NEW GALVANIZED STEEL SAFETY TREAD WITH ANGLE SUPPORTS WELDED TO EXISTING CHANNEL STRINGERS

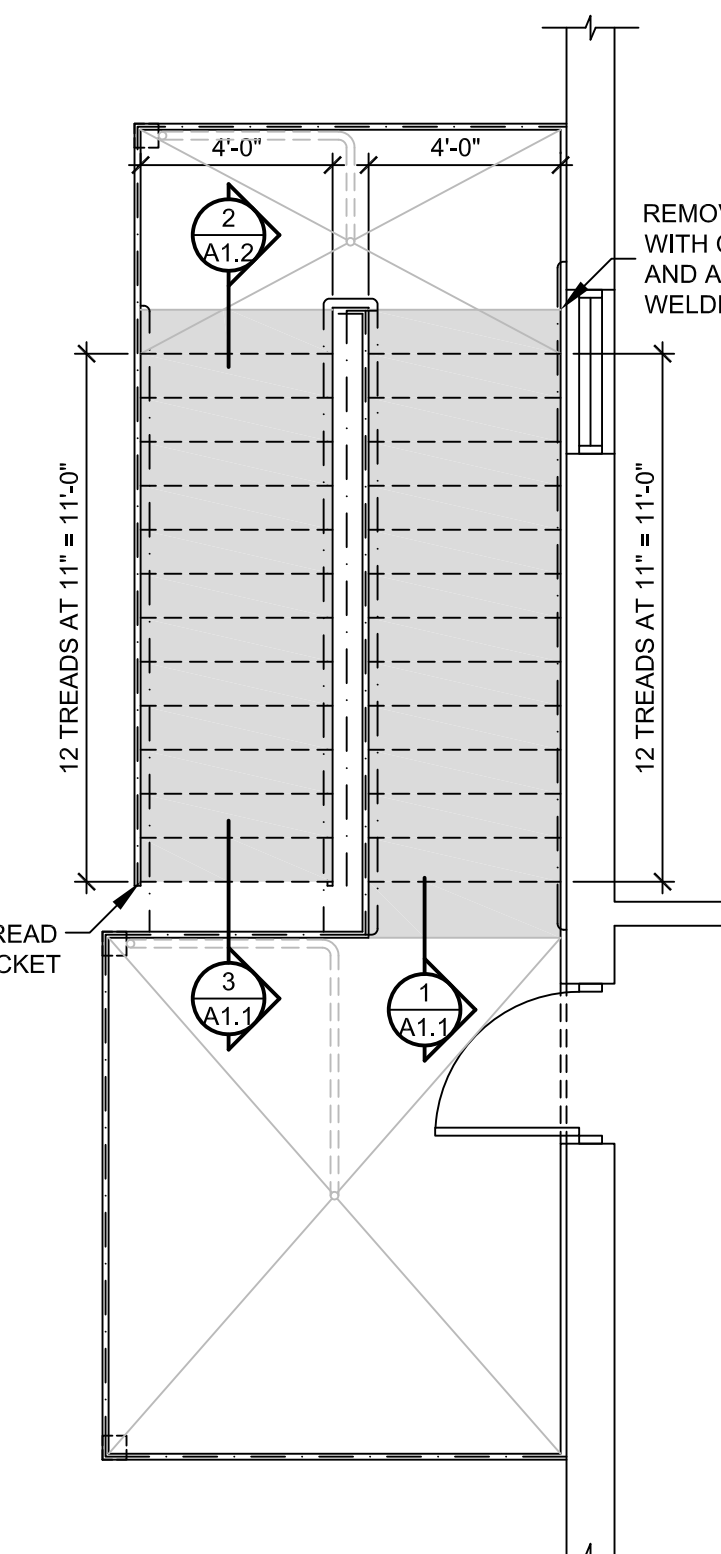


**6** DETAIL  
A1.1 SCALE: 1" = 1'-0"

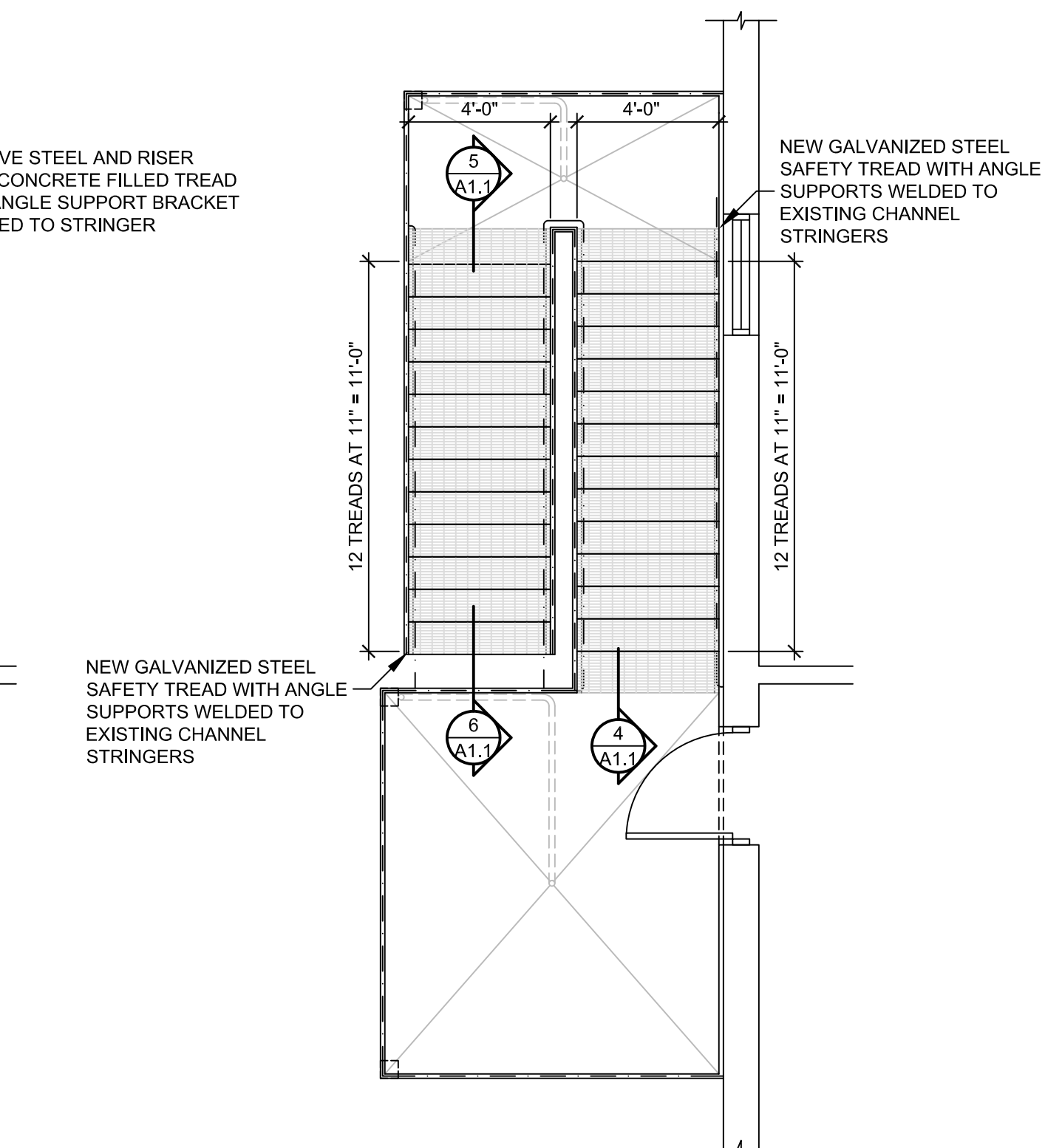


**4** DETAIL  
A1.1 SCALE: 1" = 1'-0"

REMOVE STEEL AND RISER WITH CONCRETE FILLED TREAD AND ANGLE SUPPORT BRACKET WELDED TO STRINGER



**DEMOLITION PLAN**  
SCALE: 1/4" = 1'-0"



**NEW STAIR PLAN**  
SCALE: 1/4" = 1'-0"

REVISIONS	BY

OWNERSHIP OF DOCUMENTS  
THIS DOCUMENT AND THE IDEAS AND DESIGNS CONTAINED HEREIN ARE THE PROPERTY OF BRIGHT ARCHITECTURE, AND IS NOT TO BE USED, REPRODUCED, COPIED, OR TRANSMITTED IN WHOLE OR IN PART, FOR ANY OTHER PROJECT WITHOUT THE WRITTEN AUTHORIZATION OF BRIGHT ARCHITECTURE

GENERAL NOTES  
DO NOT SCALE DRAWINGS. USE DIMENSIONS ONLY. CONTRACTOR SHALL BE RESPONSIBLE FOR VERIFYING ALL DIMENSIONS. INFORMATION HEREON IS CONFIDENTIAL.



EXTERIOR STAIR TREAD REPLACEMENT  
BRADLEY FIRE DEPARTMENT  
147 SOUTH MICHIGAN AVENUE  
BRADLEY, ILLINOIS 60915

DRAWN: JKR  
CHECKED: JEB  
DATE: 07/11/19  
SCALE: AS INDICATED  
JOB NUMBER: 1919  
SHEET

**A1.1**