

VILLAGE OF BRADLEY

RESOLUTION NO. R-03-25-01

A RESOLUTION APPROVING THE PRELIMINARY AND FINAL PLATS OF
MILLIE'S WORLD SUBDIVISION

ADOPTED BY THE
BOARD OF TRUSTEES OF THE
VILLAGE OF BRADLEY

THIS 10th DAY OF March, 2025

Adopted by the Board of Trustees of the Village of Bradley, Kankakee County, Illinois this 10th
day of March, 2025.

RESOLUTION NO. R-03-25-01

**A RESOLUTION APPROVING THE PRELIMINARY AND FINAL PLATS OF
MILLIE'S WORLD SUBDIVISION**

WHEREAS, the Corporate Authorities of the Village of Bradley, Kankakee County, Illinois, have the authority to adopt resolutions and to promulgate rules and regulations that pertain to its government and affairs and protect the public health, safety, and welfare of its citizens; and

WHEREAS, an application has been filed with the Village requesting approval of the Preliminary and Final Plats of Millie's World Subdivision (the "Plats") which are attached hereto and incorporated herein as **Exhibit A** and **Exhibit B**, respectively, for the territory legally described in said Plats ("Subject Property"); and

WHEREAS, on March 5, 2025, the Planning and Zoning Commission ("PZC") considered the Plats of Millie's World Subdivision and recommended that the Corporate Authorities approve said Plats subject to the final legal and engineering review and approval; and

WHEREAS, pursuant to the PZC's recommendation, the Corporate Authorities hereby approve the Plats of Millie's World Subdivision attached hereto subject to (i) final revisions to the Plats, (ii) compliance with the Annexation Agreement, and (iii) compliance with Village Ordinances and all other requirements.

NOW THEREFORE, BE IT RESOLVED BY THE CORPORATE AUTHORITIES OF THE VILLAGE OF BRADLEY, KANKAKEE COUNTY, ILLINOIS, PURSUANT TO ITS STATUTORY AUTHORITY, AS FOLLOWS:

SECTION 1. The Corporate Authorities hereby find that all of the recitals contained in the preamble to this Resolution are true, correct, and complete and are hereby incorporated by reference hereto and made a part hereof.

SECTION 2. The Corporate Authorities hereby approve the Preliminary and Final Plats of Millie's World Subdivision subject to (i) final revisions to the Plats, (ii) compliance with the Annexation Agreement, and (iii) compliance with Village Ordinances and all other requirements.

SECTION 3. All necessary signatures and approvals on said Plats will be made by the respective Village Officials including, but not limited to, the Village President, Village Clerk and Village Engineer, conditioned on final approval of the Village Engineer.

SECTION 4. In the event that any provision or provisions, portion or portions, or clause or clauses of this Resolution shall be declared to be invalid or unenforceable by a Court of competent jurisdiction, such adjudication shall in no way affect or impair the validity or enforceability of any of the remaining provisions, portions, or clauses of this Resolution that may be given effect without such invalid or unenforceable provision or provisions, portion or portions, or clause or clauses.

SECTION 5. All ordinances, resolutions, motions, or parts thereof, conflicting with any of the provisions of this Resolution, are hereby repealed to the extent of the conflict.

SECTION 6. This Resolution shall be in full force and effect from and after its passage and approval, as provided by law.

PASSED by the Board of Trustees on a roll call vote on the 10th day of March, 2025.

TRUSTEES:

RYAN LEBRAN	Aye - <input checked="" type="checkbox"/>	Nay - <input type="checkbox"/>	Absent - <input type="checkbox"/>
BRIAN BILLINGSLEY	Aye - <input checked="" type="checkbox"/>	Nay - <input type="checkbox"/>	Absent - <input type="checkbox"/>
DARREN WESTPHAL	Aye - <input checked="" type="checkbox"/>	Nay - <input type="checkbox"/>	Absent - <input type="checkbox"/>
BRIAN TIERI	Aye - <input checked="" type="checkbox"/>	Nay - <input type="checkbox"/>	Absent - <input type="checkbox"/>
GRANT D. VANDENHOUT	Aye - <input checked="" type="checkbox"/>	Nay - <input type="checkbox"/>	Absent - <input type="checkbox"/>
GENE JORDAN	Aye - <input type="checkbox"/>	Nay - <input type="checkbox"/>	Absent - <input checked="" type="checkbox"/>

VILLAGE PRESIDENT:

MICHAEL WATSON Aye - Nay - Absent -

TOTALS: Aye - 6 Nay - 0 Absent - 1

ATTEST:


KELLI BRZA, VILLAGE CLERK

APPROVED this 10th day of March, 2025.


MICHAEL WATSON, VILLAGE PRESIDENT

ATTEST:


KELLI BRZA, VILLAGE CLERK

STATE OF ILLINOIS)
)
COUNTY OF KANKAKEE) §§

I, Kelli Brza, Village Clerk of the Village of Bradley, County of Kankakee and State of Illinois, DO HEREBY CERTIFY that the attached is a true, perfect, and complete copy of Resolution number R-0325-01, "A RESOLUTION APPROVING THE PRELIMINARY AND FINAL PLATS OF MILLIE'S WORLD SUBDIVISION", which was adopted by the Village Corporate Authorities at a meeting held on the 10th day of March, 2025.

IN WITNESS WHEREOF, I have hereunto set my hand in the Village of Bradley, County of Kankakee and State of Illinois, on this 10th day of March, 2025.



KELLI BRZA, VILLAGE CLERK



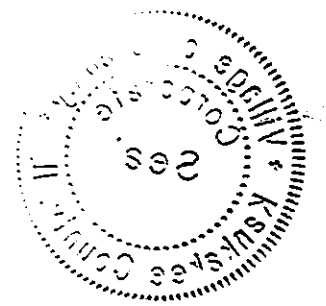
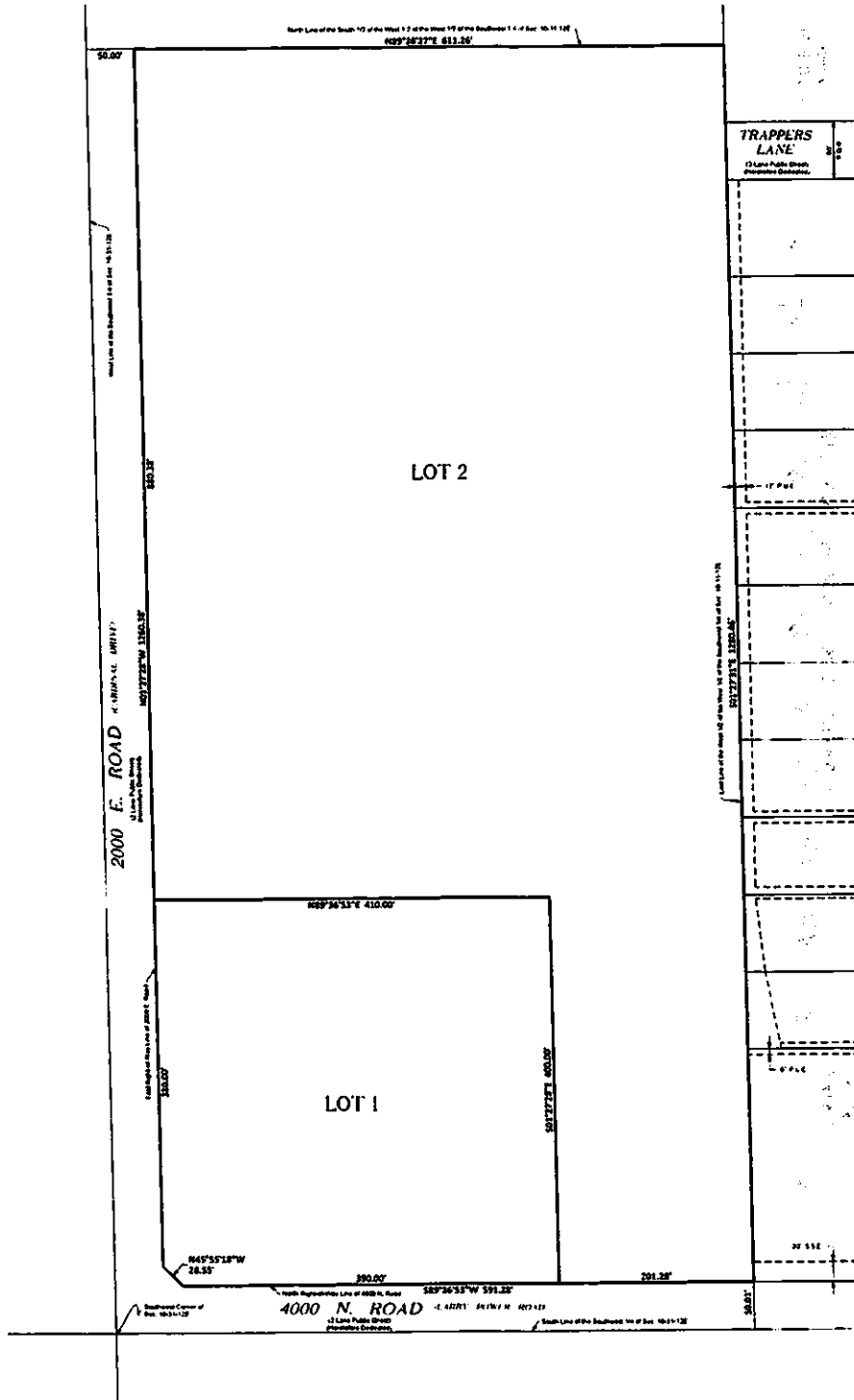


EXHIBIT A
PRELIMINARY PLAT OF
MILLIE'S WORLD SUBDIVISION

EXHIBIT B
FINAL PLAT OF
MILLIE'S WORLD SUBDIVISION

PRELIMINARY PLAT MILLIE'S WORLD SUBDIVISION



TRAPPERS LANE
 12' Wide Public Street
 Precursory Easement

LOT 2

LOT 1

2000 E. ROAD
 4' Right-of-Way (R.O.W.)
 Precursory Easement

4000 N. ROAD
 4' Right-of-Way (R.O.W.)
 Precursory Easement

LOT #	AREA
1	182,772 sq. ft.
2	84,637 sq. ft.

SCALE: 1" = 40'
LEGEND
 --- 12' WIDE STRIP
 - - - - - 12' WIDE STRIP
 --- PUBLIC UTILITY EASEMENT
 --- 12' WIDE STRIP EASEMENT

LEGAL DESCRIPTION
 BEING A SUBDIVISION OF THE SOUTH HALF OF THE WEST HALF OF THE WEST HALF OF THE SOUTHWEST QUARTER OF SECTION 10, TOWNSHIP 37 NORTH, RANGE 12 EAST OF THE THIRD PRINCIPAL MERIDIAN, SITUATE IN KANASSEE COUNTY, KANSAS.

P.L.N. No.
 17-06-16-306-002
 17-06-16-306-0010

MGA CIVIL ENGINEERING
 LAND SURVEYING
 MISSOURI REGISTERED PROFESSIONAL ENGINEERS
 PROFESSIONAL DESIGN FIRM LICENSE # 184-001806
 P. 816-429-8251 www.mga.com F. 816-429-8816
 260 N. INDUSTRIAL DRIVE | DEXTER, MO 64741

DESIGNED BY: VS/ADP/JC/MS/ST
 DRAWN BY: TVAL
 DATE: 06/11/17

PROJECT: MILLIE'S WORLD SUBDIVISION
 SHEET: M02-348

